

THE MORE I SEE YOU

HANK MOBLEY "ROLL CALL" 13.11.1960

TRANSCRIPTION - WOLFGANG M. MOLINSKI

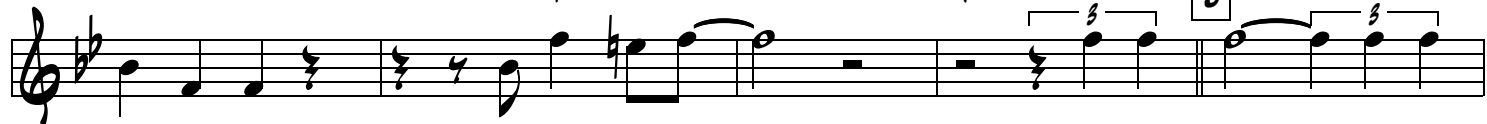
TENOR SAX

(SWING THEME)

A B^{b6/9} C⁷MI D⁷MI G⁷ C⁷MI F⁷



B^{b6/9} C⁷MI D⁷MI G⁷ C⁷MI F⁷ B B^{b7}



A^{b7}MI D^{b7} G^bMAS G⁷ G^b F^{7#9} B^{b7}MI C⁷



C⁷MI F⁷SUS A^b B^{b6/9} C⁷MI D⁷MI G⁷ C⁷MI



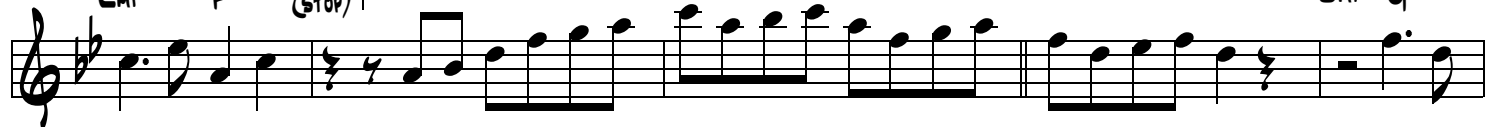
F⁷ B^{b6/9} C⁷MI D⁷MI F⁺ F⁷MI B^{b7}



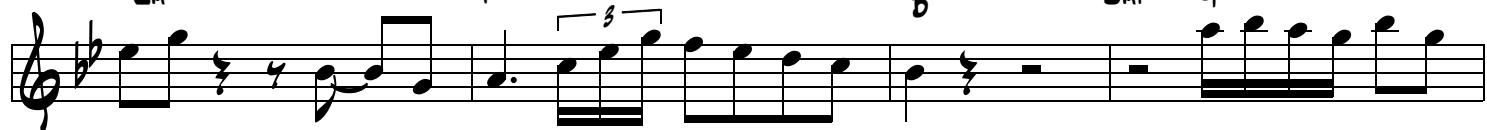
C E^bMAS E^{b7}MI A^{b7} B^b D⁷MI G⁷ C⁷ B^b



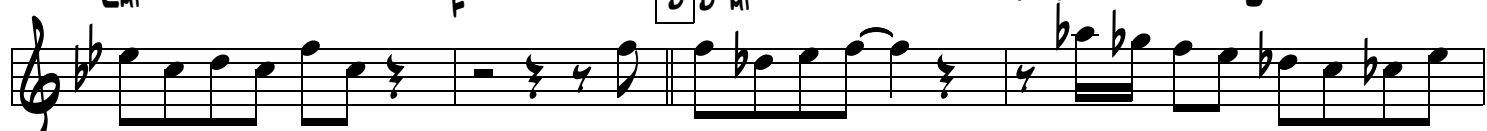
C⁷MI F⁷ (STOP) 1 A B^b C⁷MI D⁷MI G⁷



C⁷MI F⁷ B^b D⁷MI G⁷



C⁷MI F⁷ B B^{b7}MI A^{b7}MI D^{b7}



G^b MAJ F⁷ B^{b7}
 C⁷ Cm⁷ F#sus⁷ A^{#b}
 Dmi⁷ G⁷ Cm⁷ F⁷ F^{#7} B^b Dmi⁷ G⁷
 Fmi⁷ B^{b7} C E^b MAJ E^bmi⁷ A^{b7}
 B^b Dmi⁷ F⁷ F^{ALT} B^b G⁷
 Cm⁷ F⁷ B^b Gmi⁷
 Cm⁷ F⁷ B^b 2 A B^b
 Dmi⁷ G⁷ Cm⁷ F⁷
 B^b Gmi⁷ Dmi⁷ G⁷ Cm⁷ F⁷
 B^bmi⁷ A^bmi⁷ D^{b7} G^b F^{#7} F^{#7}

Handwritten musical score for "The More I See You" in E-flat major. The score consists of six staves of music with various chords and melodic lines. Chords include B^b, C^M7, F^{SUS}7, A^b, B^bC^M7, D^M7, G⁷, C^M7, F⁷, B^b, D^M7, G⁷, F^M7, B^b7, C^M E^b M^A G, E^b M⁷, B^b, A^b7, G⁷, C⁷, B^b, B^b M, C^M7, F⁷, B^b, B^b M, C^M7, F^{ALT}7, B^b.